



Light oil burners at 1 stage – Low NOx (NOx < 120 mg/kWh).
 Frame made in aluminium, sound-attenuated protection cover, high efficiency combustion head with micrometric adjustment, high flame stability and low emissions.
 Compact dimensions and efficient location of the components with easy access for settings and maintenance activities.
 R versions are equipped with pre-heater with temperature control.
 Supplied with plug/socket (7 poles), flange and gasket for installation on boiler, nozzle, flexible hoses and line filter.

TECHNICAL DATA

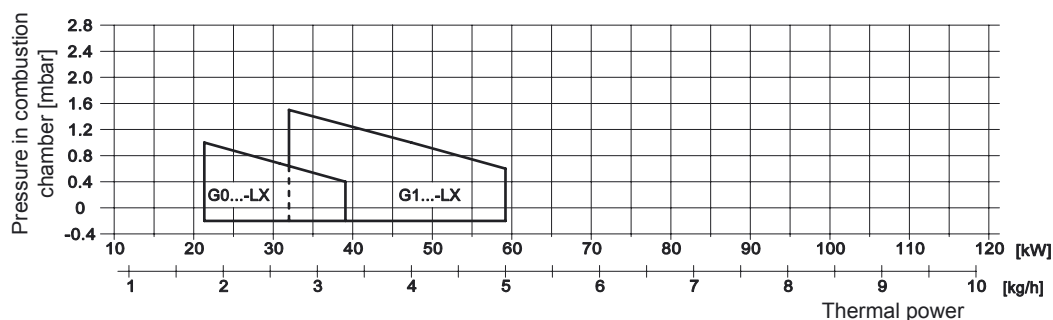
MODEL		G0SR - LX	G0S - LX	G1SR - LX	G1S - LX
Delivery min-max *	kg/h	1,8-3,3	1,8-3,3	2,7-5,0	2,7-5,0
Thermal power min-max*	Mcal/h	18,4-33,7	18,4-33,7	27,5-51	27,5-51
Thermal power min-max*	kW	21,3-39	21,3-39	31,9-59,2	31,9-59,2
Fuel		LIGHT-OIL 1.5°E a 20°C = 6.2 cSt = 35 sec Redwood N°1			
Nox	m	< 120 : class 3 (EN 267)			
Intermittent operation		(min. 1 stop every 24 hours) one stage			
Allowed environment conditions on running/stock		-15...+40°C / -20...+70°C, relative humidity max 80%			
Max temperature combustive air	°C	60	60	60	60
Nominal electric power	W	190	120	220	130
Pump motor power	W	90	90	100	100
Power absorbed	A	0.9	0.6	1	0.6
Pre-heater	W	30-110	-	30-110	-
Power supply		1/N~230V-50Hz			
Degree of electric protection		IP40			
Noisiness ** min-max	dBA	56-58	56-58	57-59	57-59
Weight ***	kg	8	8	10	10

* Condition of reference: Temperature environment 20°C - Barometric pressure 1013 mbars - Altitude 0 m o.l.s.

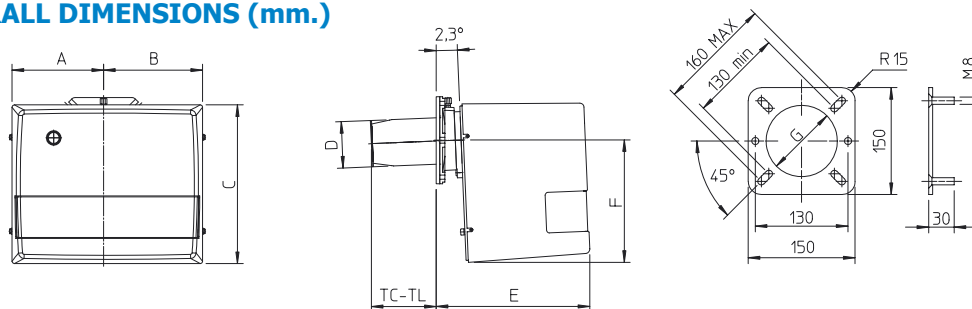
** Measured sonorous pressure in the laboratory combustion, with functional burner on beta boiler to 1 m of distance.

*** For burner with iron cover (F) add 2kgs to the weight.

FIRING RATES: Heat output – Combustion chamber pressure



OVERALL DIMENSIONS (mm.)



MODEL	A	B	C	D	E	F	G	TXC	TC	TL
G0...-LX	137	137	240	80	223	169	90	85	120	160
G1...-LX	157	170	275	90	265	210	100	-	120	160